

SPIDER CRANE  
**MC285C-3**

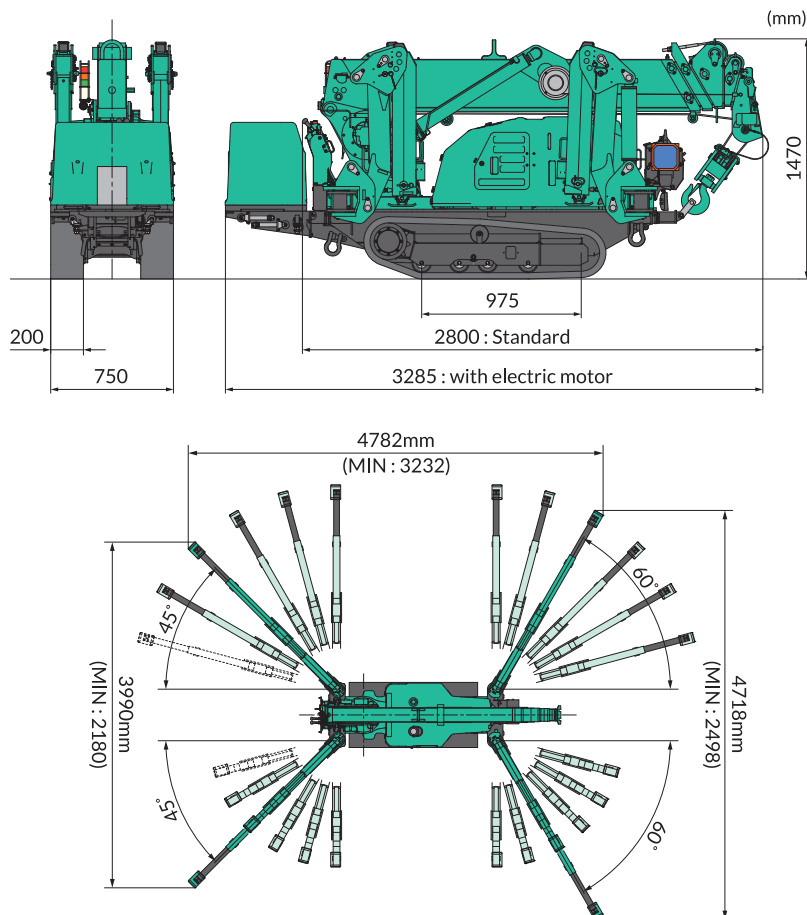
**TECHNICAL DATA**  
Metric(CE)

**Specifications**

Crane Capacity	2.82t x 1.4m
Max. Working Radius	8.205m x 0.15t
Max.Lifting Height	8.7m
Max. Reach Below Ground	-10.1m (4 falls)
Max. Reach Below Ground (Aux Winch)	-100m (single fall)
Outrigger Max.Extended Width	(Lateral) 4,782mm x (Front) 4,718mm x (Rear) 3,990mm
Travel Speed	0-2.2km/h
Travel Ground Pressure (MC285CWM-3)	50.0kpa (0.510kgf/cm <sup>2</sup> )
Travel Ground Pressure (MC285CWME-3)	54.3kpa (0.554kgf/cm <sup>2</sup> )
Engine	YANMAR 2TNV70-NMBA / Diesel
Engine Rated Output	7.4kw/2,500rpm
Engine (*MC285CGRM-2)	Briggs & Stratton 3564 / Petrol
Engine Rated Output (*MC285CGRM-2)	10.8kw/2,600rpm
Electric Motor	5.5kw, 4P 380V
Dimensions (MC285CWM-3)	2,800mm (L) x 750mm (W) x 1,470mm (H)
Dimensions (MC285CWME-3)	3,285mm (L) x 750mm (W) x 1,470mm (H)
Machine Weight (MC285CWM-3)	1,990kg
Machine Weight (MC285CWME-3)	2,160kg

\*Gasoline engine model is only available as MC285CGRM-2.

**Dimensions**



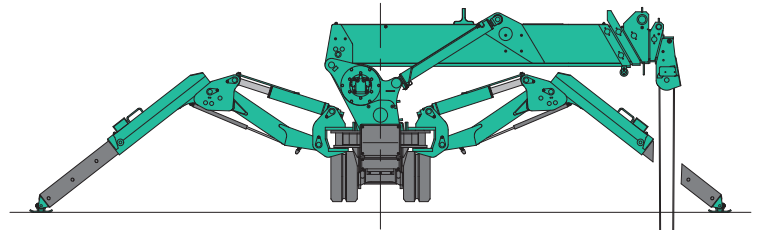
SPIDER CRANE  
**MC285C-3**

**TECHNICAL DATA**

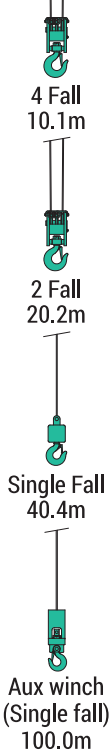
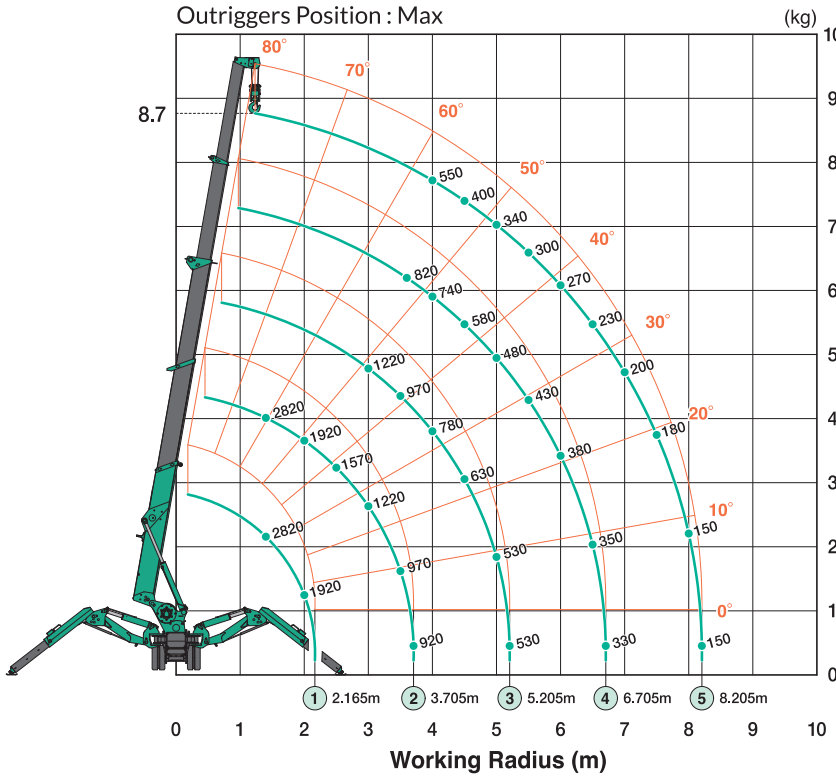
Metric(CE)

**Working Range Chart**

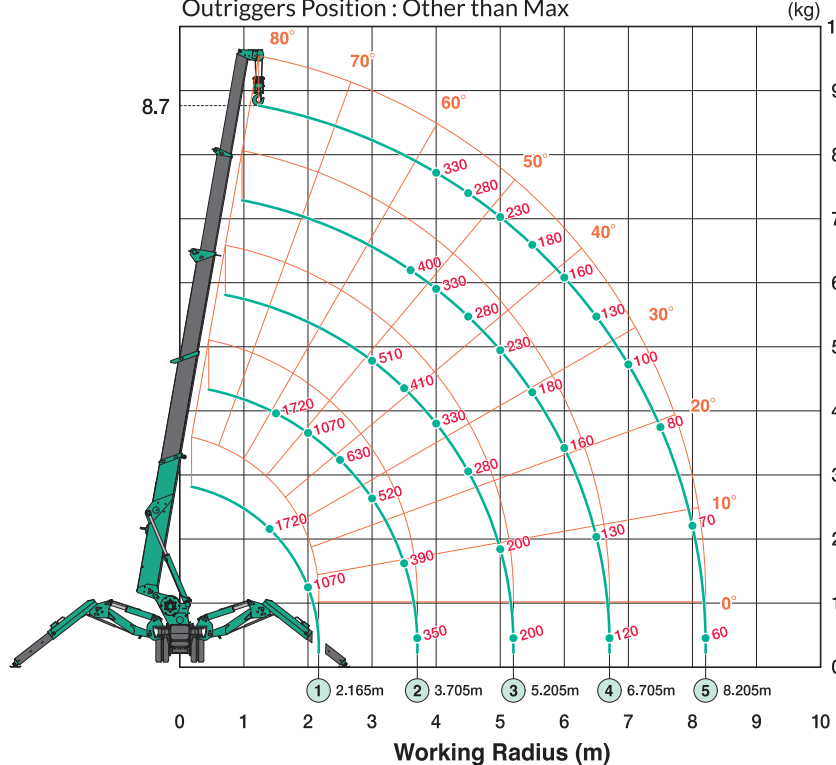
Max. Below Grade



Outriggers Position : Max



Outriggers Position : Other than Max



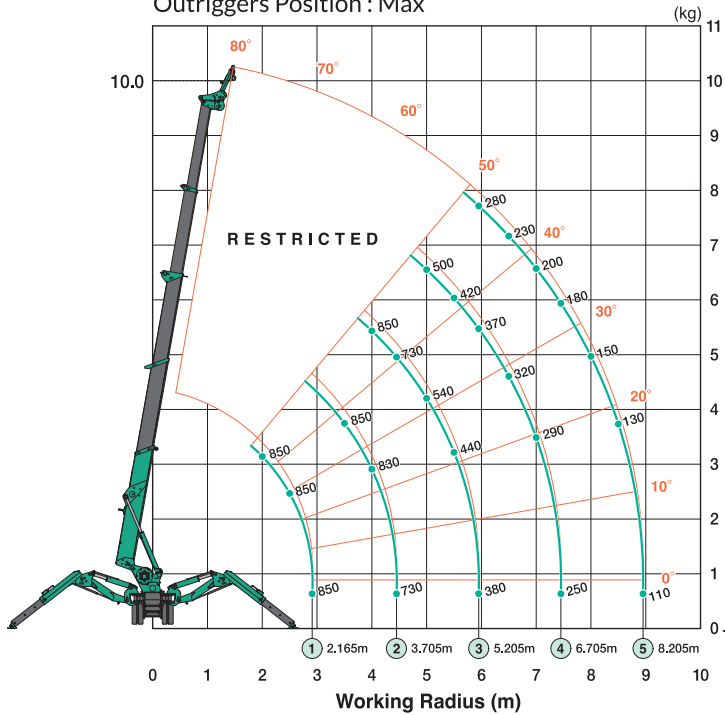
SPIDER CRANE  
**MC285C-3**

**TECHNICAL DATA**  
Metric(CE)

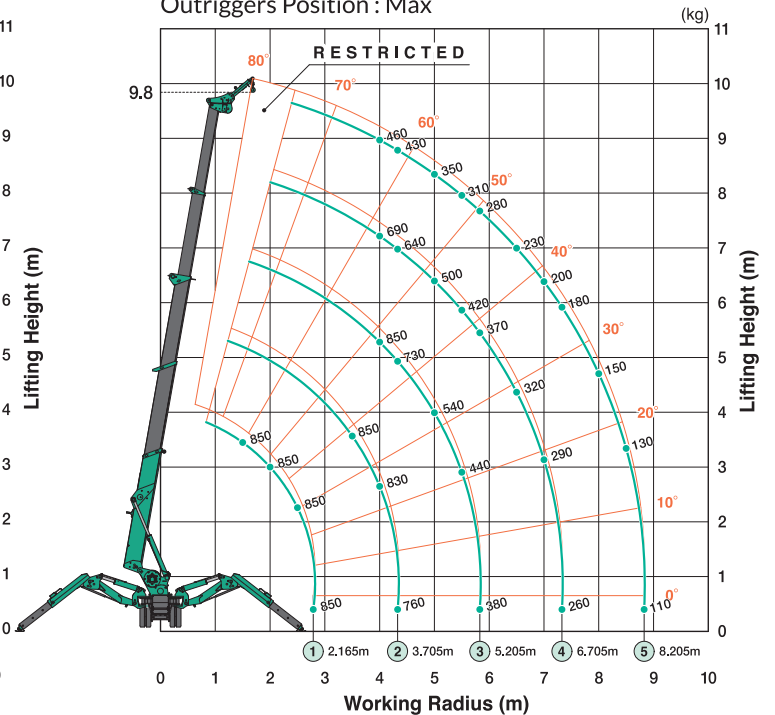
**Working Range Chart**

850kg Searcher Hook

850kg Searcher Hook (Offset Position : SH1)  
Outriggers Position : Max



850kg Searcher Hook (Offset Position : SH2)  
Outriggers Position : Max



850kg Searcher Hook (Offset Position : SH3)  
Outriggers Position : Max

